

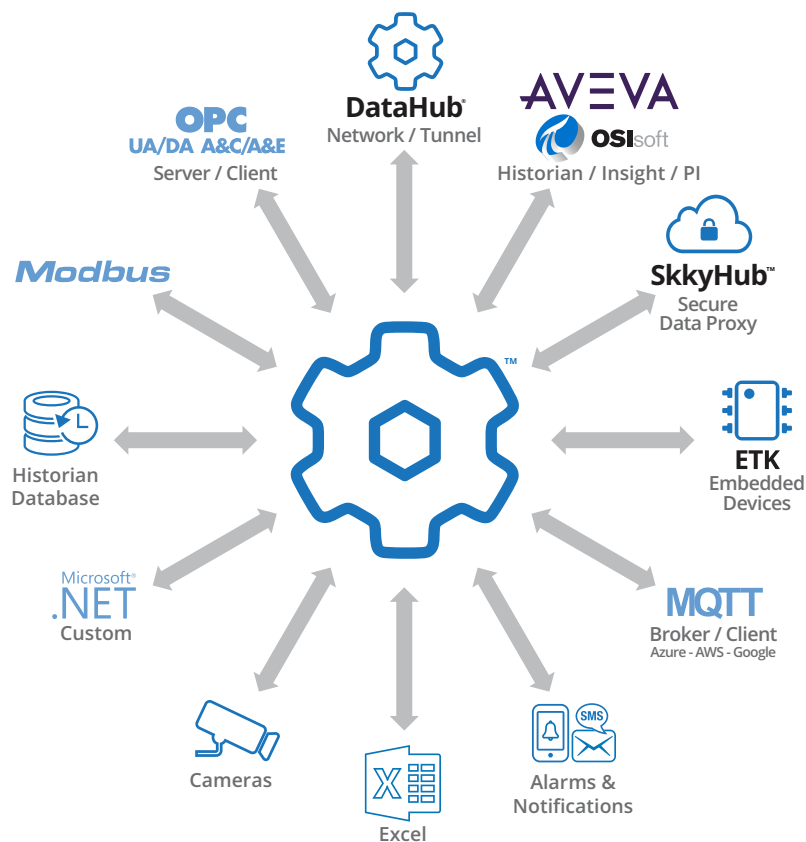


# DataHub® External Historian

Connect to AVEVA Historian, AVEVA Insight and OSIsoft PI

## Collect data from anywhere

Bring data from virtually any SCADA system, PLC, remote device or custom program into a single unified data set, and log it to AVEVA Historian, AVEVA Insight, OSIsoft PI, or any combination thereof.



## Log data from almost any source

Use AVEVA Historian/Insight or OSIsoft PI to collect data from any SCADA system, PLC, or device that offers an OPC UA or OPC Classic interface, as well as any SQL database, Modbus slave, Excel spreadsheet, or custom program.

## Aggregate multiple data sources

Collect data using standard industrial protocols (OPC UA, OPC Classic, MQTT, MQTT Sparkplug B, Modbus, DDE,

TCP, ODBC, HTTP, XML, and more) into a single, unified data set. All of this aggregated data or any selected subset can be logged to AVEVA Historian, AVEVA Insight, OSIsoft IP, or any combination thereof.

## Includes store and forwarding capabilities

If the network connection goes down, you don't lose any data. DataHub® middleware supports store-and-forwarding to AVEVA Historia, AVEVA Insight and OSIsoft PI.

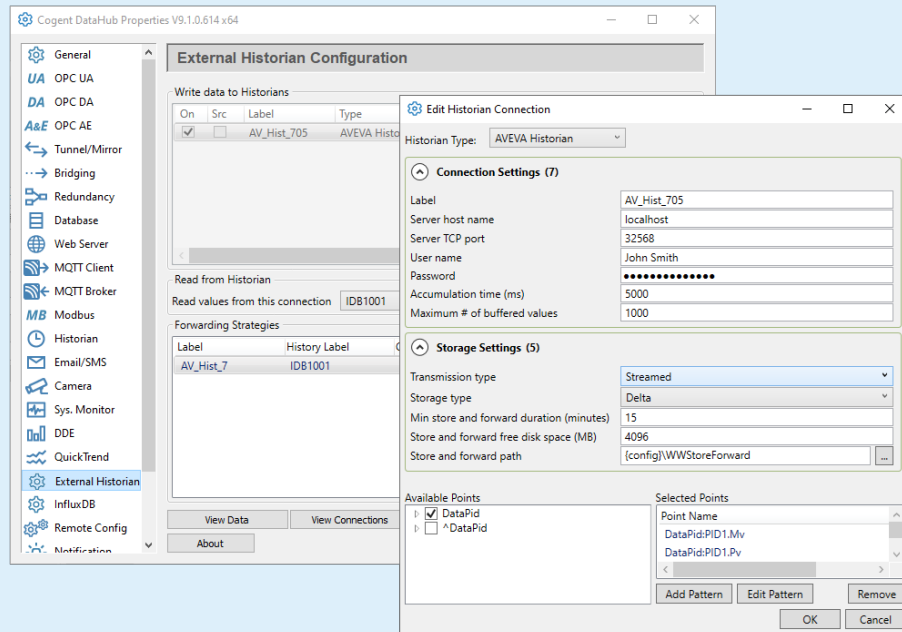
## Standard Features

- AVEVA Historian/Insight support - connect to AVEVA Historian locally, or Historian/Insight on a network with optional full store and forward capability
- OSIsoft PI support - connect to OSIsoft PI with optional full store and forward capability

## Popular DataHub Licenses on AVEVA Digital Exchange

Add the External Historian feature to any of these licenses:

- DataHub® OPC Gateway™
- DataHub® DA Tunneller™ for OPC
- DataHub® OPC Bridge™



## System information

DataHub® middleware supports OPC UA (server and client), OPC UA A&C (server and client), OPC UA HDA (server), OPC Classic (DA 3, DA 2, and A&E), as well as Modbus TCP, MQTT, MQTT Sparkplug B, ODBC, DDE, TCP, HTTP and more. It runs on the following operating systems:

- Windows Server 2019 / 2016
- Windows Server 2012 & R2
- Windows Server 2008 & R2
- Windows Server 2003 & R2 (DataHub v8 only)
- Windows 10 / 8.1 / 7
- Windows XP SP2 (DataHub v8 only)

## About Skkynet

Skkynet Cloud Systems, Inc. is a global leader in real-time data communication systems, providing the award-winning SkkyHub™ service, DataHub® middleware, and Embedded Toolkit (ETK) software, which enable secure, real-time data connectivity for industrial automation, Industrial IoT, and Industrie 4.0. For more information, see <https://skkynet.com>.

Skkynet®, DataHub®, SkkyHub™, the Skkynet and DataHub logos are either registered trademarks or trademarks used under license by the Skkynet group of companies ("Skkynet").

## Ordering Information

PRODUCT	CODE	DESCRIPTION
AVEVA Historian/Insight	ADDAHI	DataHub External Historian / AVEVA Historian and Insight
OSIsoft PI	ADDPI	DataHub External Historian / OSIsoft PI